

How 2005 helps us predict 2009

Ethan Scheiner

2005 offers lots of information for 2009

- Especially vote swing (absolute value)
- And margin of victory
- (2003 also provides a nice baseline)

Best predictor of vote swing now is swing in the previous election

- Unit: All LDP & DPJ candidates in 2009
- DV = vote swing 05 to 09 (absolute value)

	swing03	swing05	swing09
voteswing_prev	-0.0567 (-0.71)	0.194** (2.93)	0.185** (3.25)
ldp	-0.0209* (-2.57)	0.0144* (2.43)	-0.0211** (-3.17)
did	-0.0277* (-2.19)	0.0240* (2.33)	0.0307** (3.00)
postal_there	0	0.145*** (7.24)	0
Constant	0.105*** (9.42)	0.0317*** (3.51)	0.111*** (13.61)
N	393	413	522

The LDP lost seats in 09 where there was a big swing in votes from 03 to 05

- DV=Did LDP lose seat (that it won in 05)?

swing05	8.052*	(2.05)
margin05	-8.495**	(-3.07)
PR_margin03	-9.417**	(-2.88)
SMD_inc	-0.589	(-1.21)
TERMS	-0.0345	(-0.55)
AGE	0.0437*	(2.31)
FEMALE	-0.135	(-0.21)
N	208	216 total

2005

Big Shift in Focus of Campaigns

- Pre-2005: All about the individual candidates
- 2005-on: All about the parties

Pre-05: Key was individual candidates

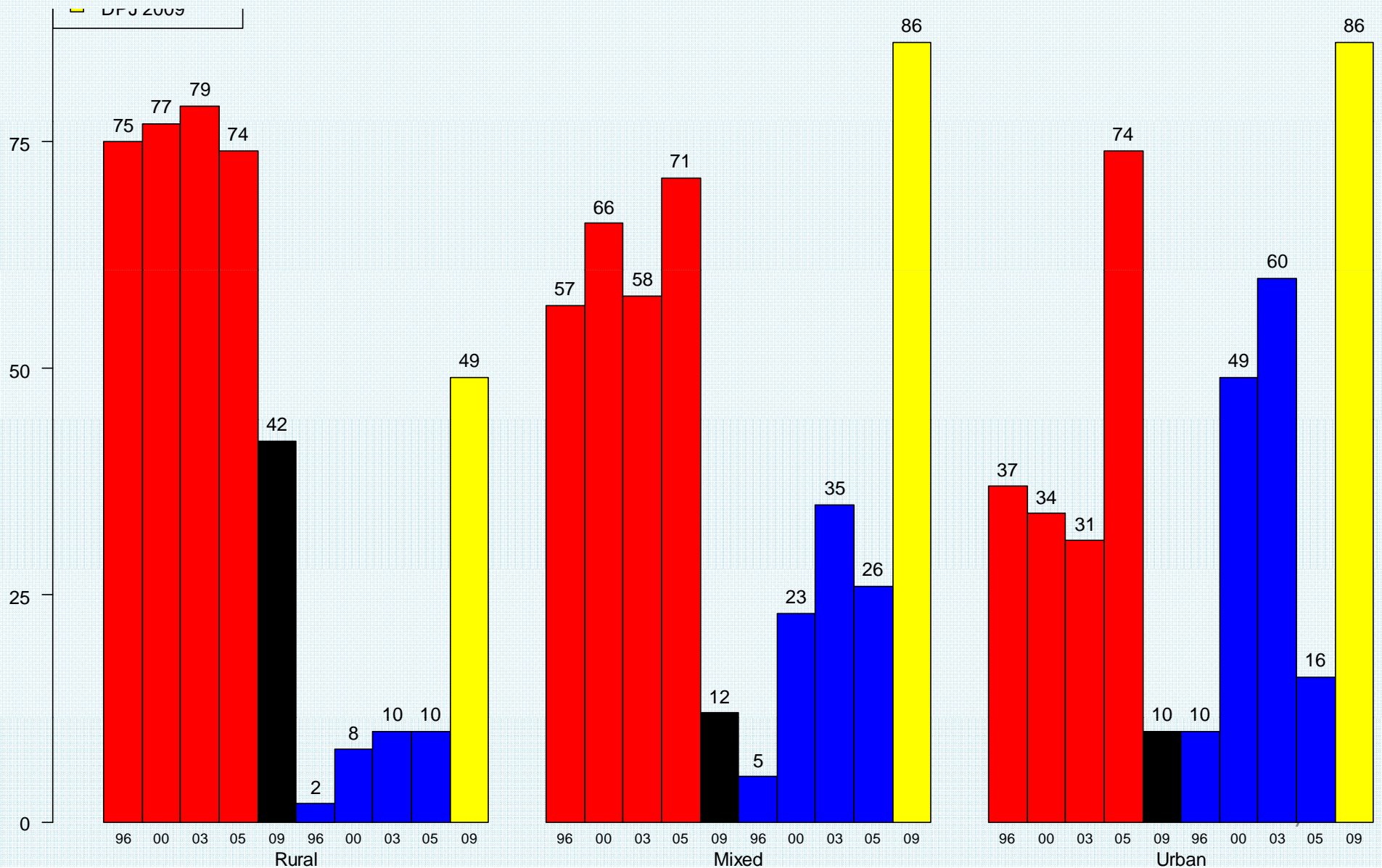
2005-09: Elections are nationalized

- Unit: All LDP and DPJ new candidates
- DV = Did win SMD?

	Win 00	Win 03	Win 05	Win 09
Quality	1.137*** (4.34)	0.707** (2.74)	0.566 (1.63)	0.491 (1.87)
LDP	-0.218 (-0.42)	-0.105 (-0.20)	3.451*** (3.69)	-1.982*** (-4.39)
N	192	186	187	151

- And similar results when include SMD incumbents in model

LDP's 2009 Loss of Rural Seats Surprising?



But LDP was losing votes in rural SMDs in 2005

2005 LDP SMD Vote Swings (from 2003)

- Urban: +8%
 - Mixed: +2%
 - Rural: -5%
-
- LDP candidates losing votes in 2005 in rural areas even when no postal rebels present!